

SOVARANI MEMORIAL COLLEGE, STUDENT FEEDBACK  
ANALYSIS-2019-20

Student Feedback is one of the most effective and qualitative tools which can cautiously improve the teaching-learning process of an institution. In our institution all these are collected applying the on-line mode from the senior most final year students of all departments. It may be pointed out here that it is the starting period of the ongoing pandemic (COVID-19) situation. Under noted seven scholastic characteristics of a dignified mentor have been framed for student feedback. Different techniques have been applied on the five point scale to judge the performance of teachers individually along with departmental level. The characteristics include:

Q1 for Ability to teach

Q2 for Ability to generate interest in subject

Q3 for Overall punctuality in taking classes

Q4 for Efforts to teach and complete the curriculum

Q5 for Rate your teacher in terms of exam orientation

Q6 for Availability of teachers beyond class hours and

Q7 for Ability to be friendly with students

The undernoted Tables have also summarized the Mean score of each department

**Student Feedback**

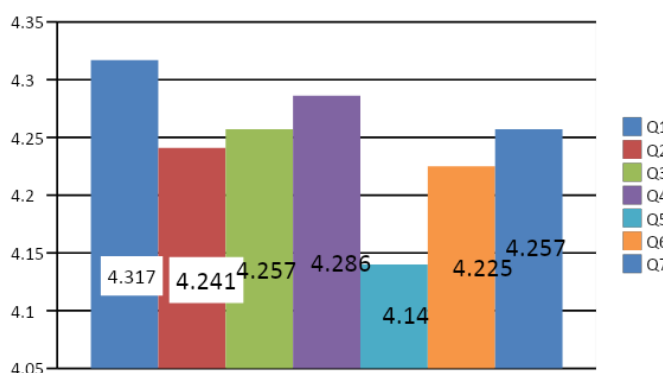
Sl No.	Departments	students
1	Commerce	55
2	Maths	15
3	Phys	9
4	Chem	30

5	Zoology	35
6	Botany	17
	<b>Science</b>	<b>106</b>
7	Beng	63
8	Eng	19
9	Hist	66
10	Pol Sc	91
11	Phil	58
12	Eco	4
13	Edu	39
14	Sans	54
15	Phy Edu	17
16	Arabic	3
	<b>Arts</b>	<b>414</b>
	<b>TOTAL</b>	<b>575</b>

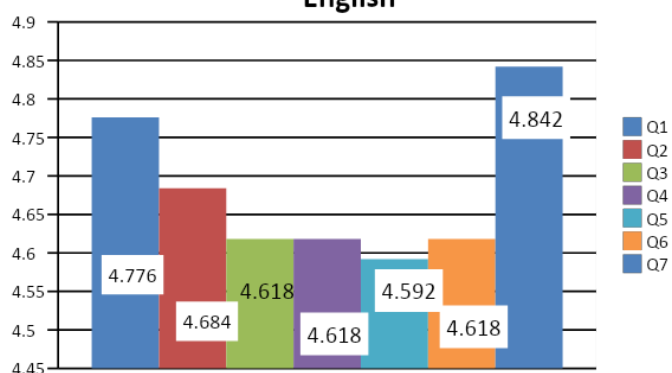
### Mean Score of Students' Feedback on Departments: 2019-20

Sl No.	Departments	Q1	Q2	Q3	Q4	Q5	Q6	Q7
1	<b>Commerce</b>	<b>4.5</b>	<b>4.444</b>	<b>4.532</b>	<b>4.588</b>	<b>4.472</b>	<b>4.514</b>	<b>4.491</b>
2	Mathematics	4.957	4.914	4.929	4.943	4.957	4.957	4.957
3	Physics	4.651	4.54	4.603	4.571	4.746	4.54	4.619
4	Chemistry	4.467	4.4	4.4	4.333	4.383	4.25	4.517
5	Zoology	4.664	4.693	4.907	4.871	4.843	4.557	4.686
6	Botany	4.882	4.745	4.941	5	4.902	4.804	4.98
	<b>Science</b>	<b>4.7242</b>	<b>4.6584</b>	<b>4.756</b>	<b>4.7436</b>	<b>4.7662</b>	<b>4.6216</b>	<b>4.7518</b>
7	Bengali	4.317	4.241	4.257	4.286	4.14	4.225	4.257
8	English	4.776	4.684	4.618	4.618	4.592	4.618	4.842
9	History	4.543	4.485	4.52	4.606	4.543	4.455	4.505
10	Political Science	4.708	4.589	4.727	4.721	4.675	4.626	4.67
11	Philosophy	4.659	4.521	4.548	4.61	4.521	4.5	4.586
12	Economics	4.25	4.25	4.188	4.188	4.188	4.188	3.938
13	Education	4.795	4.487	4.487	4.795	4.756	4.564	4.538
14	Sanskrit	4.787	4.815	4.704	4.806	4.87	4.731	4.75
15	Physical Education	5	5	5	5	5	5	5
16	Arabic	5	5	5	5	5	5	5
	<b>Arts</b>	<b>4.6835</b>	<b>4.6072</b>	<b>4.6049</b>	<b>4.663</b>	<b>4.6285</b>	<b>4.5907</b>	<b>4.6086</b>

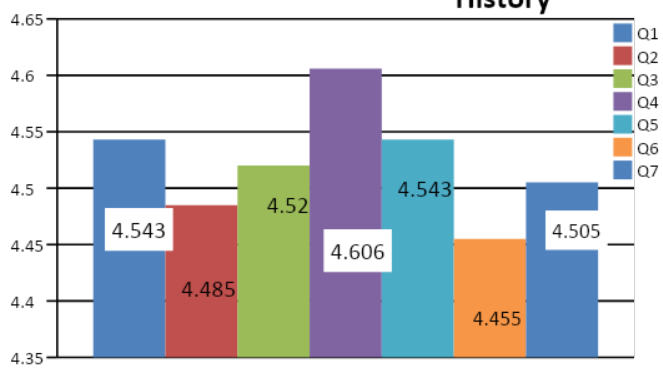
**Bengali**



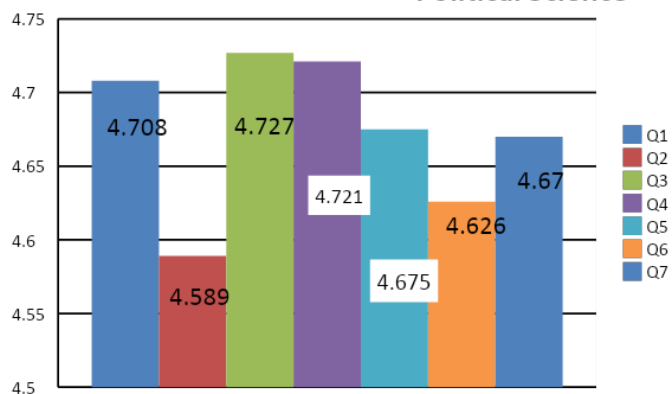
**English**



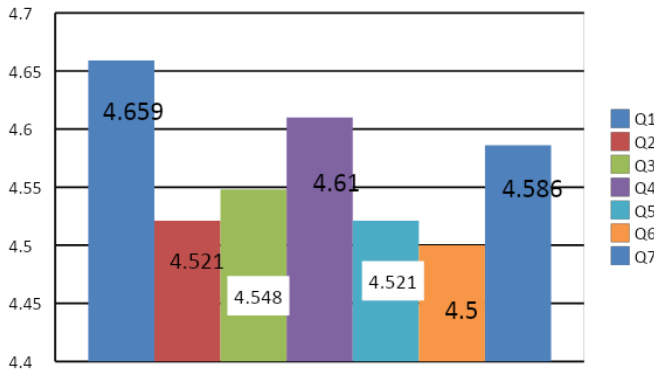
**History**



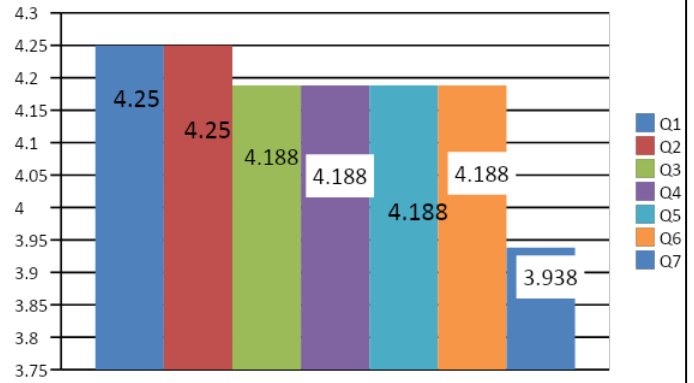
**Political Science**



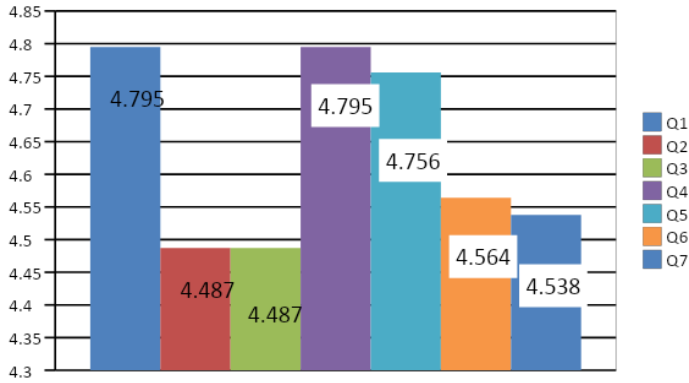
### Philosophy



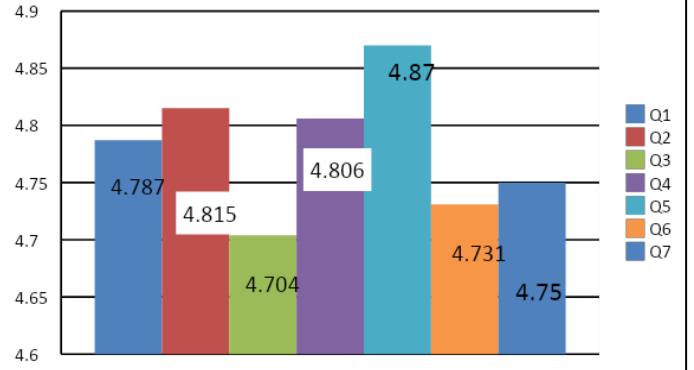
### Economics



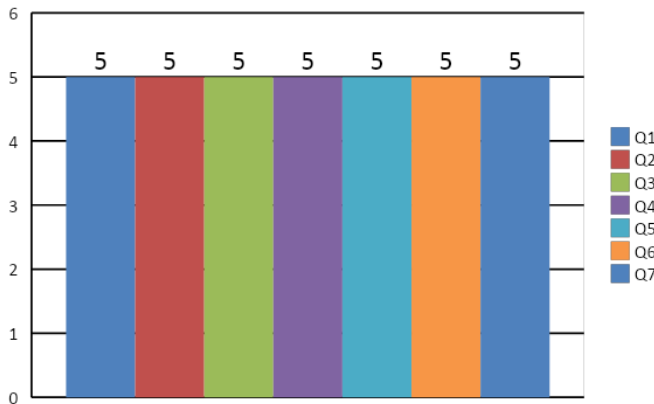
### Education



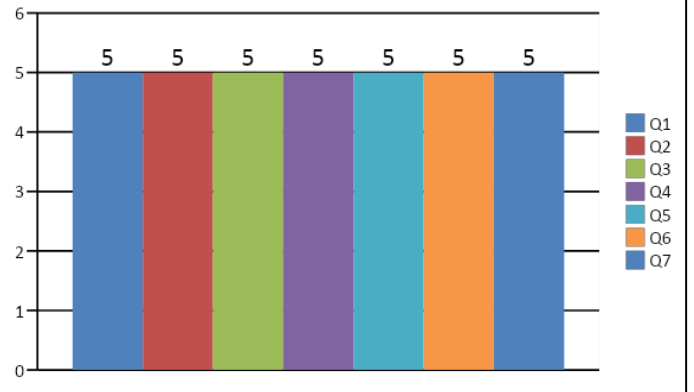
### Sanskrit



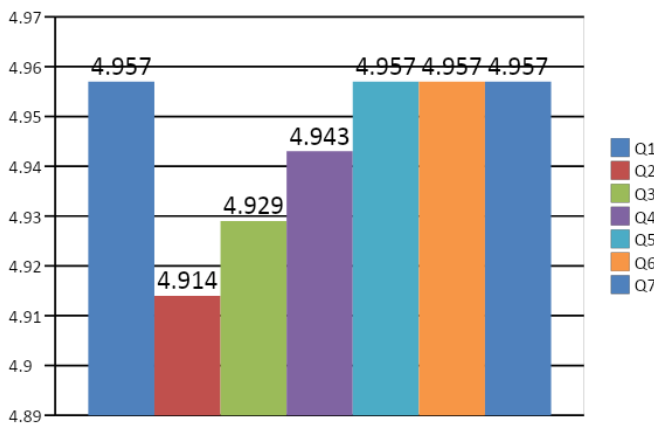
### Physical Education



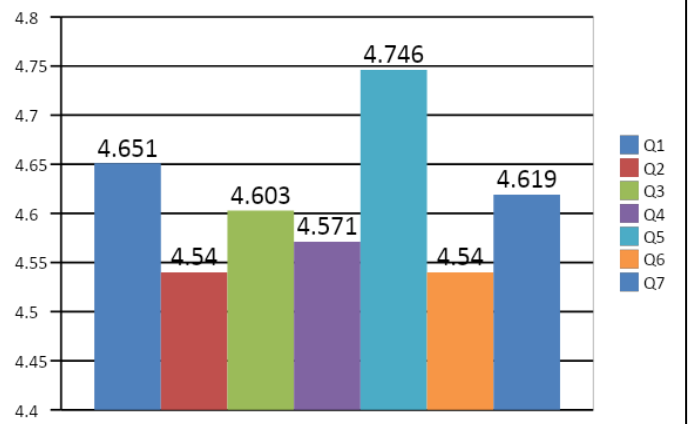
### Arabic

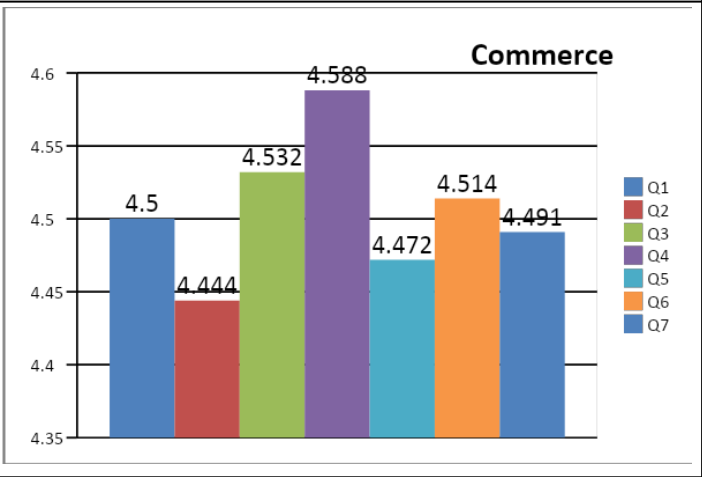
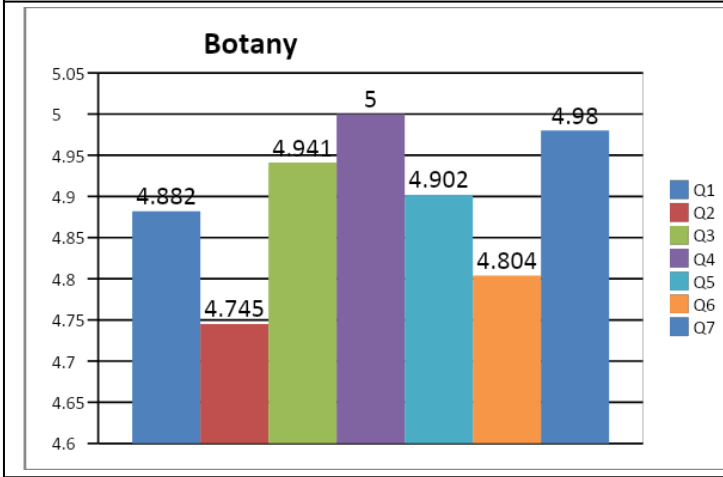
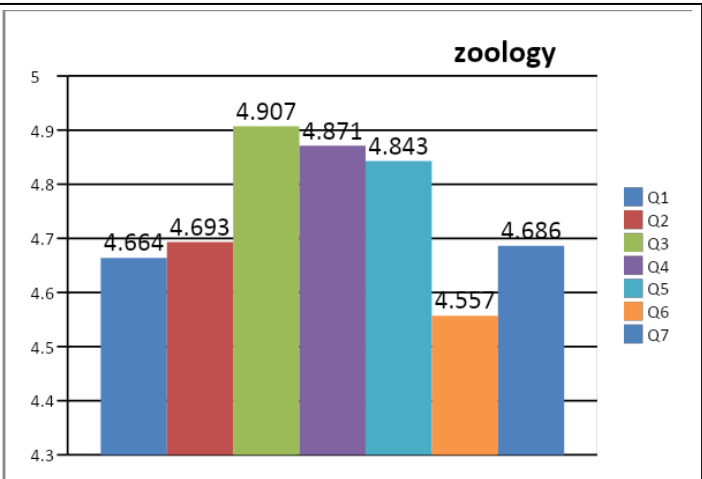
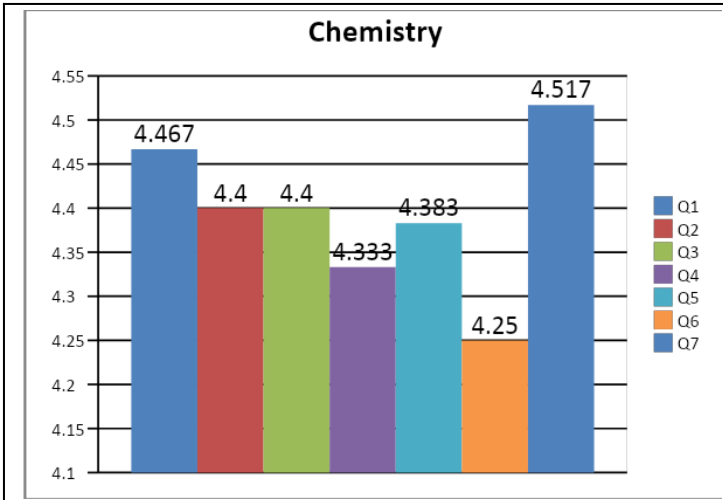


### Mathematics

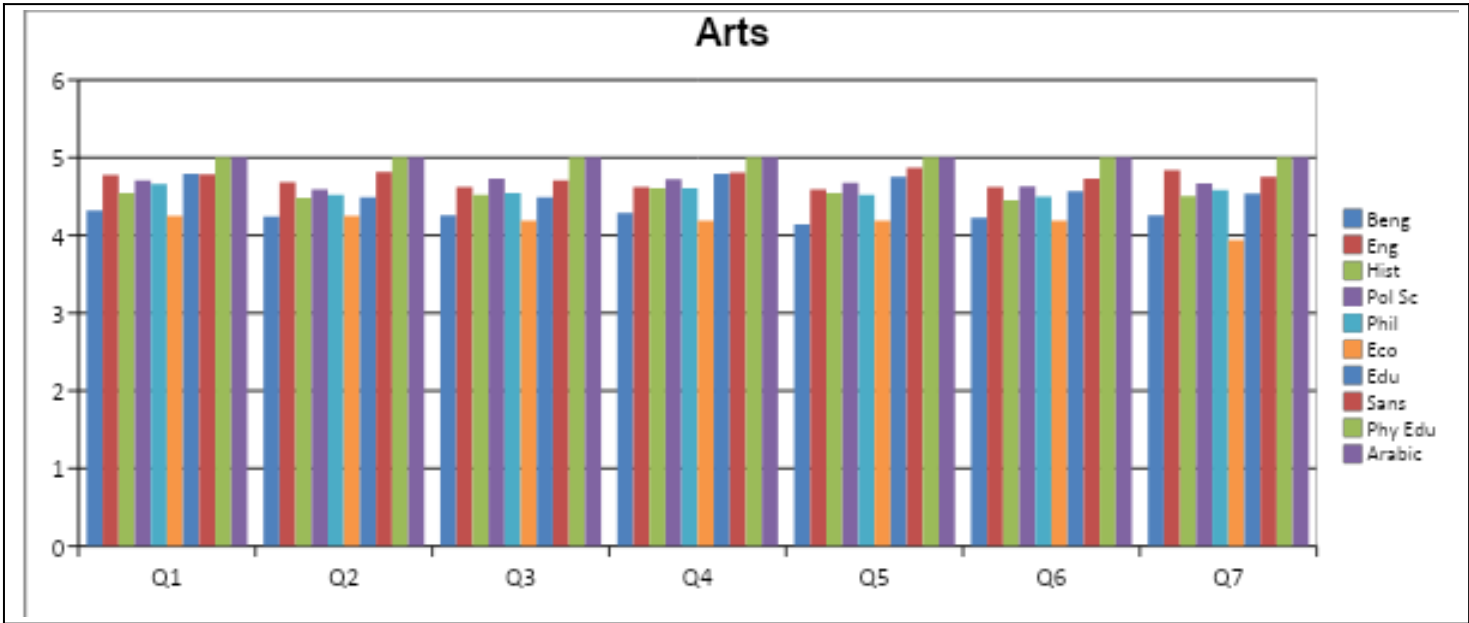


### Physics

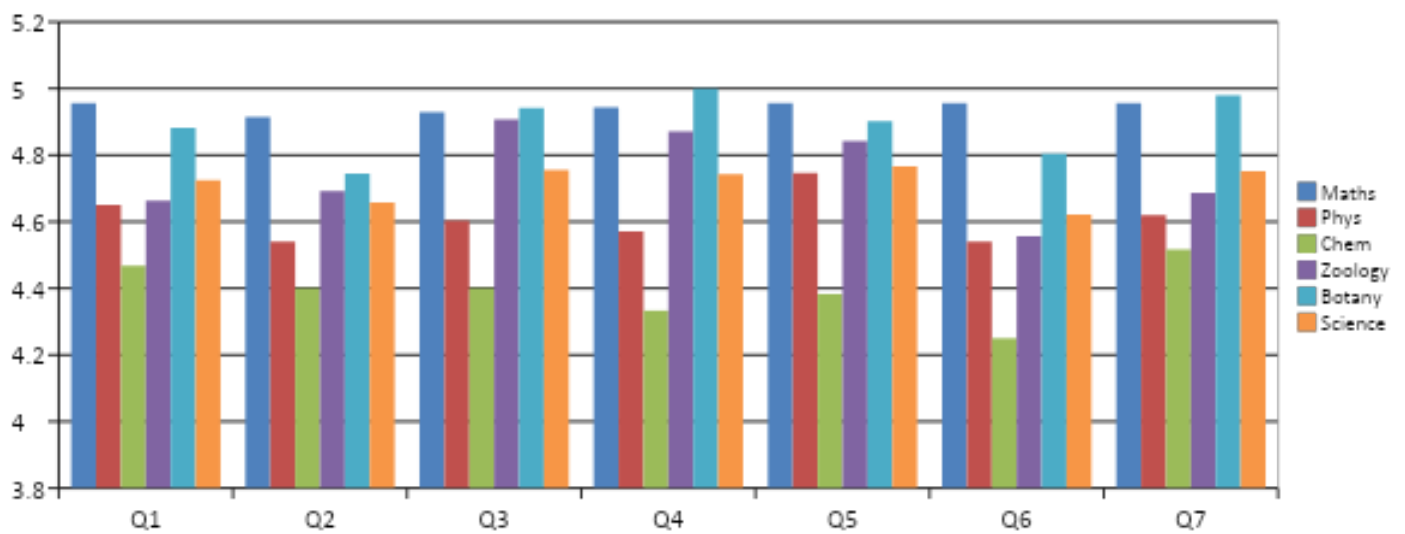




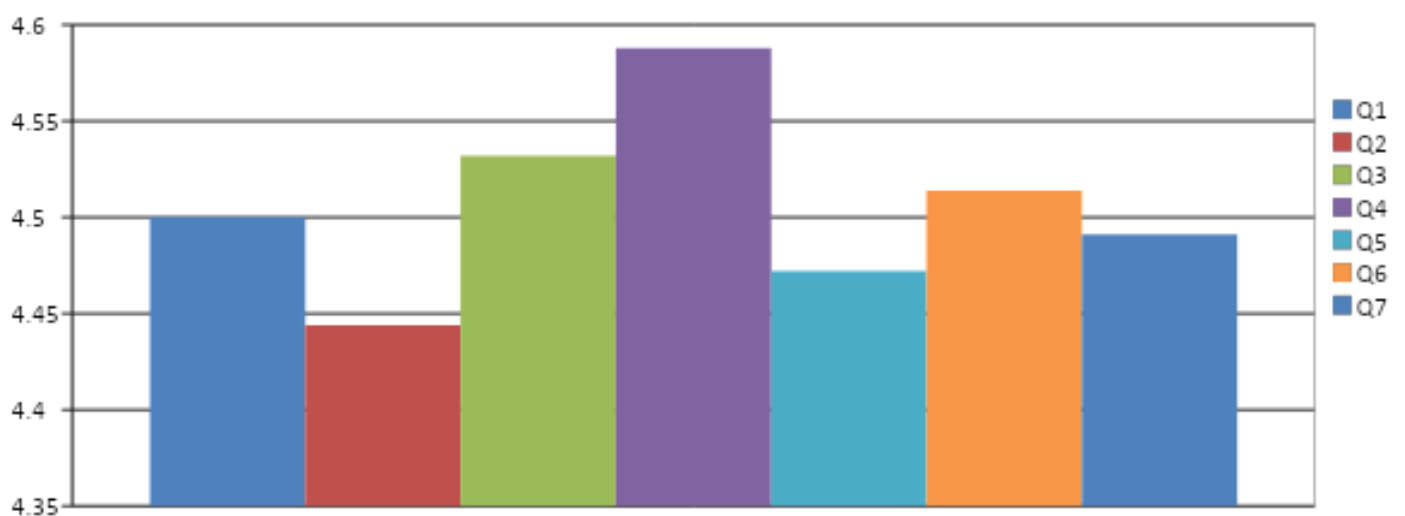
# Characterise Comparative Diagram



### Science

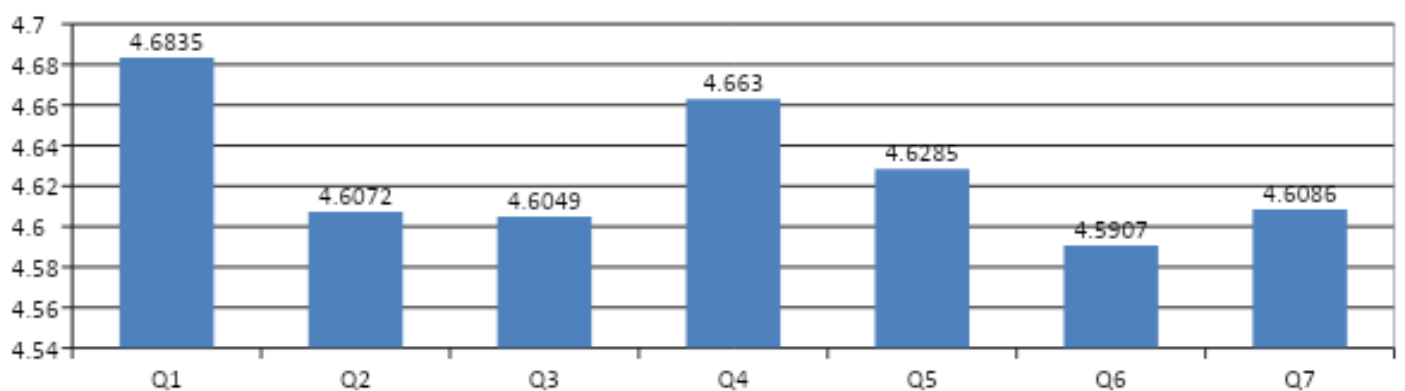


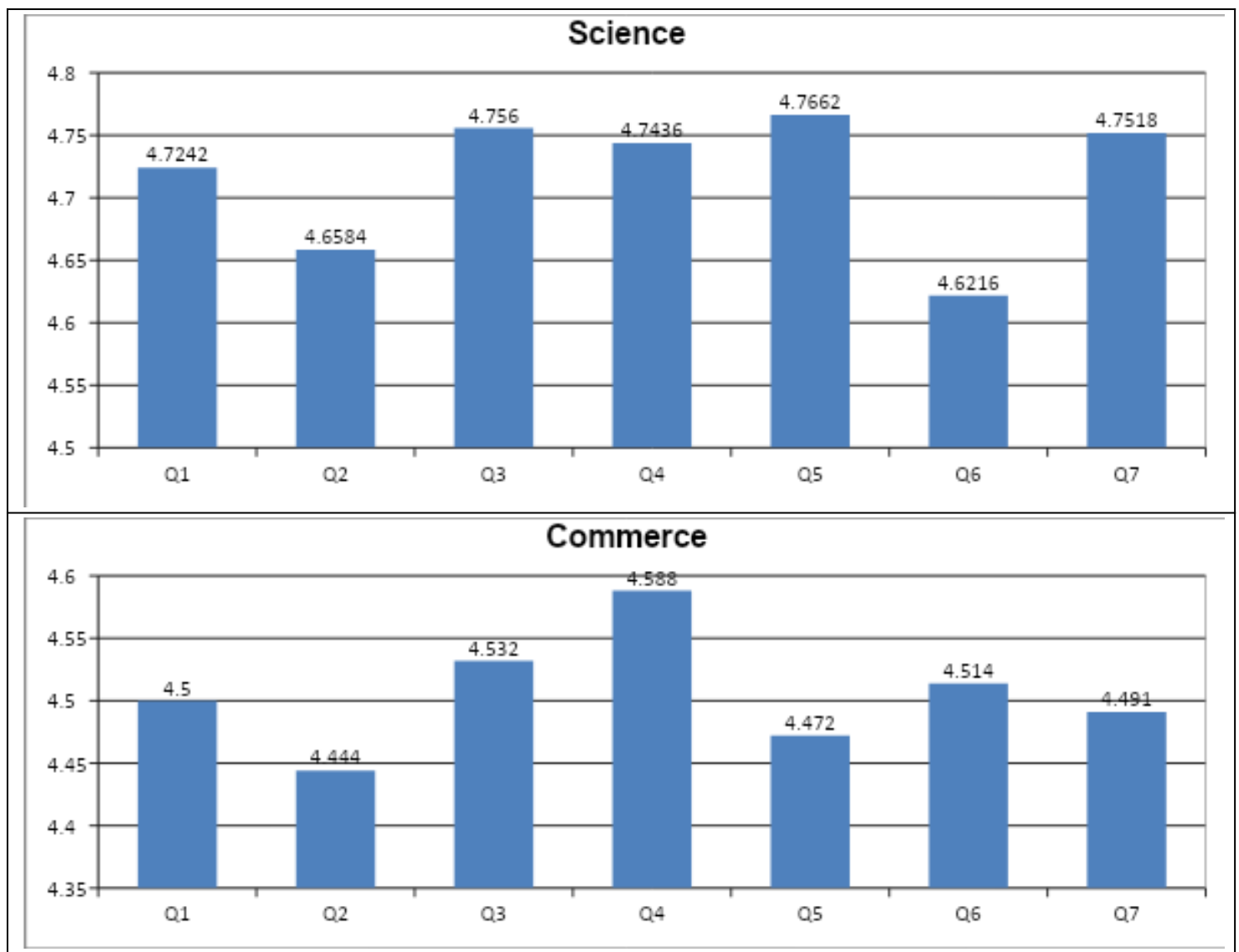
### Commerce



## Overall Departmental Evaluation

### Arts





The summary report and analysis of the data of the students' feedback is confidentially handed over to the Principal in sealed envelopes. The Principal maintaining secrecy had talked about the strength and weakness of each faculty individually



# SOVARANI MEMORIAL COLLEGE

## STUDENTS' FEEDBACK ON TEACHERS PERFORMANCE (SESSION 2019-2020)

Dept. of Political Science

COURSE: Honours / General

Part-III

Properties of Evaluation (মূল্যায়নের বিষয়)		PB	LG	PS	AC
1.	Overall punctuality in taking classes (ক্লাস নেওয়ার ক্ষেত্রে শিক্ষকের সার্বিক সময়ানুবর্তিতা)	A	C	A	B
2.	Ability to generate interest in subject (পাঠ্য বিষয়ের প্রতি আগ্রহ সঞ্চারে সক্ষমতা)	A	D	B	B
3.	Ability to relate subjects with real life (বাস্তবিক জীবনের সাথে পাঠ্য বিষয়ের সমন্বয় সাধনে সক্ষমতা)	B	B	A	A
4.	Efforts to teach and complete the curriculum (পাঠ্যক্রম শিক্ষনে ও সমাপ্তকরনে প্রচেষ্টা)	B	A	A	B
5.	Ability to simplify hard topics (বিষয়ের কঠিনতাকে সরলীকরনে প্রচেষ্টা)	A	C	A	B
6.	Efforts to clarify doubts (সন্দেহ নিরসনের প্রচেষ্টা)	A	A	A	A
7.	Extent of using ICT[Information and Communication Technology] in teaching-learning (পঠন-পাঠনে তথ্য ও যোগাযোগ প্রযুক্তি ব্যবহারের মাত্রা)	E	B	A	C
8.	Availability of teachers beyond class hours (শ্রেণী সময়সূচীর বাইরে শিক্ষকের প্রাপ্যতা)	A	B	C	A
9.	Rate your teacher in terms of exam orientation (পরীক্ষাভিমুখী প্রভুত্বিত্তে শিক্ষকের ভূমিকাকে মূল্যায়ন কর)	A	B	A	B
10.	Extent of job oriented discussion in class (শ্রেণীকক্ষে পেশাভিত্তিক আলোচনার মাত্রা)	A	C	A	C

\* Rate your teacher in the following scale (নিম্নবর্ণিত স্কেলে শিক্ষকের মান নির্ধারণ কর)  
Very Good=A, Good=B, Above Average=C, Average=D, Needs Improvement=E

Your suggestion for improvement (উন্নয়নকল্পে তোমার প্রস্তাব)

.....

.....

.....